



Infrastructure Strategy 2018-2020

Raising Aspirations
Inspiring Achievement
Increasing Opportunities



Principal's Introduction

This Infrastructure Strategy sets out our vision for the Estates, Facilities and Infrastructure of Ayrshire College. Its purpose is to help facilitate the College's strategic goals outlined in the Strategic Plan 2017-2020. Its success will be crucial to the delivery of excellence in learning and teaching. Since our last Estates Strategy (2010-2015), the following strategic goals have been delivered:

- Consolidation of the estate to our 3 main campuses at Ayr, Kilwinning and Kilmarnock
- Opening of a new campus in Kilmarnock in October 2016



- Co-location at Dean Castle Country Park in partnership with East Ayrshire Council
- Disposal of surplus property assets
- Co-location at Irvine Royal Academy in partnership with North Ayrshire Council
- Creation of a new fully IT-enabled hospitality and tourism suite on our Ayr campus



- Creation of new Student Association offices in our Ayr and Kilwinning campuses
- Creation of new Partnership Centres in our Ayr and Kilwinning campuses

- Rolling roof replacement programme and replacement windows in the Dam Park building on our Ayr campus



- New Student Services and Learning Resource Centres in our Ayr and Kilwinning campuses with new laptop provision

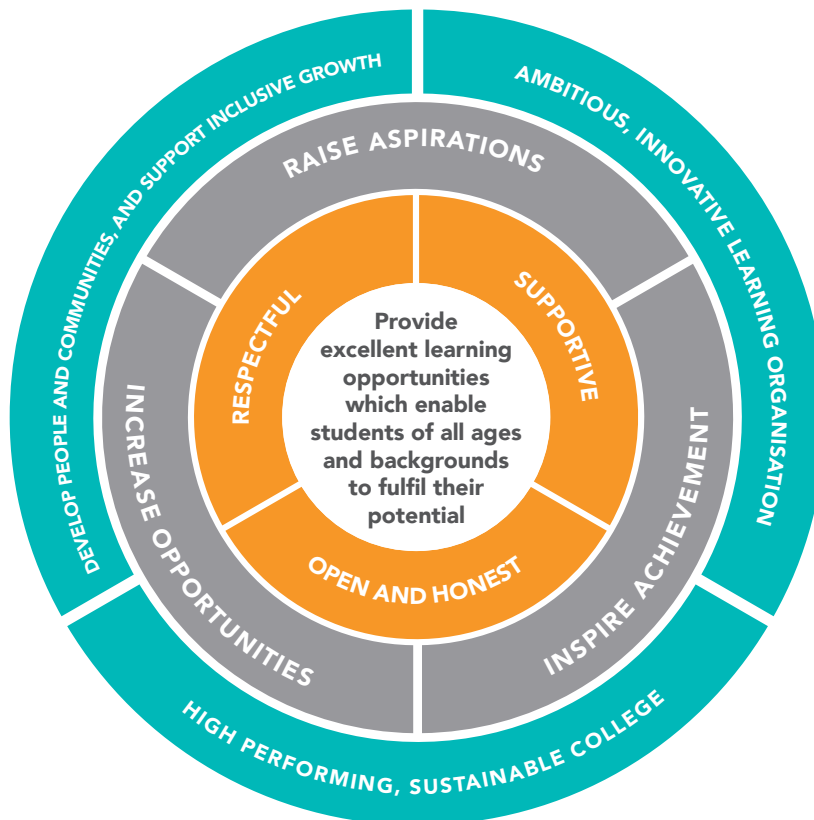


- New refectories and cafes at our Ayr and Kilwinning campuses
- New heating system in the Riverside Building on our Ayr campus
- New Advanced Materials Lab in the Aeronautical Building on our Ayr campus
- New toilet facilities throughout the Dam Park Building on our Ayr campus



Our Strategic Wheel

Our Strategic Wheel demonstrates that our values, vision and strategic goals are all centred around our mission to provide excellent learning opportunities which enable students of all ages and backgrounds to fulfil their potential.



MISSION



VALUES



VISION



STRATEGIC GOALS

Infrastructure Vision

Our vision is to enhance our student and staff learning and working environments by providing contemporary, efficient, inspiring and sustainable spaces with excellent digital connectivity and ICT. By doing so, we will help raise aspirations, inspire achievement and increase opportunities.

Strategic Aims

This strategy has five key Strategic Aims:

**AIM
01**

Create modern and inspiring learning and social spaces which deliver an excellent experience for all college users

**AIM
02**

Maintain our buildings and facilities to the highest level and provide a healthy and safe learning and working environment

**AIM
03**

Invest in industry standard equipment and resources which will equip students for work or further study

**AIM
04**

Develop an innovative and secure ICT infrastructure which meets the needs of all college users

**AIM
05**

Embed sustainability and carbon management reduction initiatives across the college

By implementing the ambitions of this strategy by 2020 we will have:

- An efficient, flexible, fit for purpose estate across all campuses which inspires students and provides employers with access to a highly skilled workforce
- A safe and well maintained estate achieved in partnership with our PFI and NPD operators
- Industry standard equipment and resources being accessed by students in all of our curriculum areas
- An innovative and secure ICT infrastructure which provides an excellent digital experience for college users
- A reduction in our carbon footprint and environmental sustainability embedded in the life and work of the College

**AIM
01**

Create modern and inspiring learning and social spaces which deliver an excellent experience for all college users

We will achieve this strategic aim by:

- Prioritising investment in key sector curriculum areas and front-facing student support services
- Increasing the utilisation rates of our learning and social spaces
- Attracting investment from the Ayrshire College Foundation and other grant providers
- Working collaboratively with key partners to identify opportunities for co-location and innovative solutions to maximise the potential of the collective estates

**AIM
02**

Maintain our buildings and facilities to the highest level and provide a healthy and safe learning and working environment

We will achieve this strategic aim by:

- Using our capital and revenue grants to maintain our buildings and facilities to a high standard
- Prioritising further investment for the improvement of the Dam Park building on our Ayr campus
- Making health and safety requirements our first priority
- Working in partnership with our PFI and NPD operators to ensure the buildings and facilities in our Kilwinning and Kilmarnock campuses are maintained to the highest standards and provide a safe and inspiring learning and working environment

**AIM
03**

Invest in industry standard equipment and resources which will equip students for work or further study

We will achieve this strategic aim by:

- Providing access to industry standard equipment and resources for all College users
- Working with industry partners and key stakeholders to identify opportunities for the shared use of specialist equipment and resources
- Ensuring investment decisions are directly linked to future curriculum requirements which reflect the needs of the economy

AIM 04

Develop an innovative and secure ICT infrastructure which meets the needs of all college users

We will achieve this strategic aim by:

- Ensuring that College users across all campuses can access a secure and innovative ICT infrastructure
- Prioritising ICT investment in curriculum and service areas
- Working collaboratively with key partners to identify opportunities for co-location and access to specialised and innovative digital spaces and services
- Working collaboratively with our curriculum staff and learning technologists to ensure all staff and students have access to flexible, convenient and accessible learning, supported by a robust digital infrastructure

AIM 05

Embed sustainability and carbon management reduction initiatives across the college

We will achieve this strategic aim by:

- Aligning investment to support our sustainability plans and commitment for carbon reduction
- Improving the environmental performance of our buildings, facilities, equipment and ICT resources
- Continuing to be innovative across the College to reduce waste, water consumption and energy costs, for example, ecoflush on toilets and LED lighting
- Continuing to be innovative in the use of consumables across the College, for example, through the use of recyclable disposable paper towels by hairdressing, FSC certified timber utilised by construction, and compostable vegeware utilised by catering services rather than plastic
- Fully embracing digital practice and reduce paper and printing requirements



AYR CAMPUS

DAM PARK
AYR
KA8 0EU

TEL: 0300 303 0303

KILMARNOCK CAMPUS

HILL STREET
KILMARNOCK
KA1 3HY

TEL: 0300 303 0303

KILWINNING CAMPUS

LAUCLAN WAY
KILWINNING
KA13 6DE

TEL: 0300 303 0303



www.ayrshire.ac.uk